

C - AIR Series

Reliable Screw Air Compressor



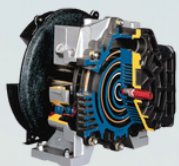
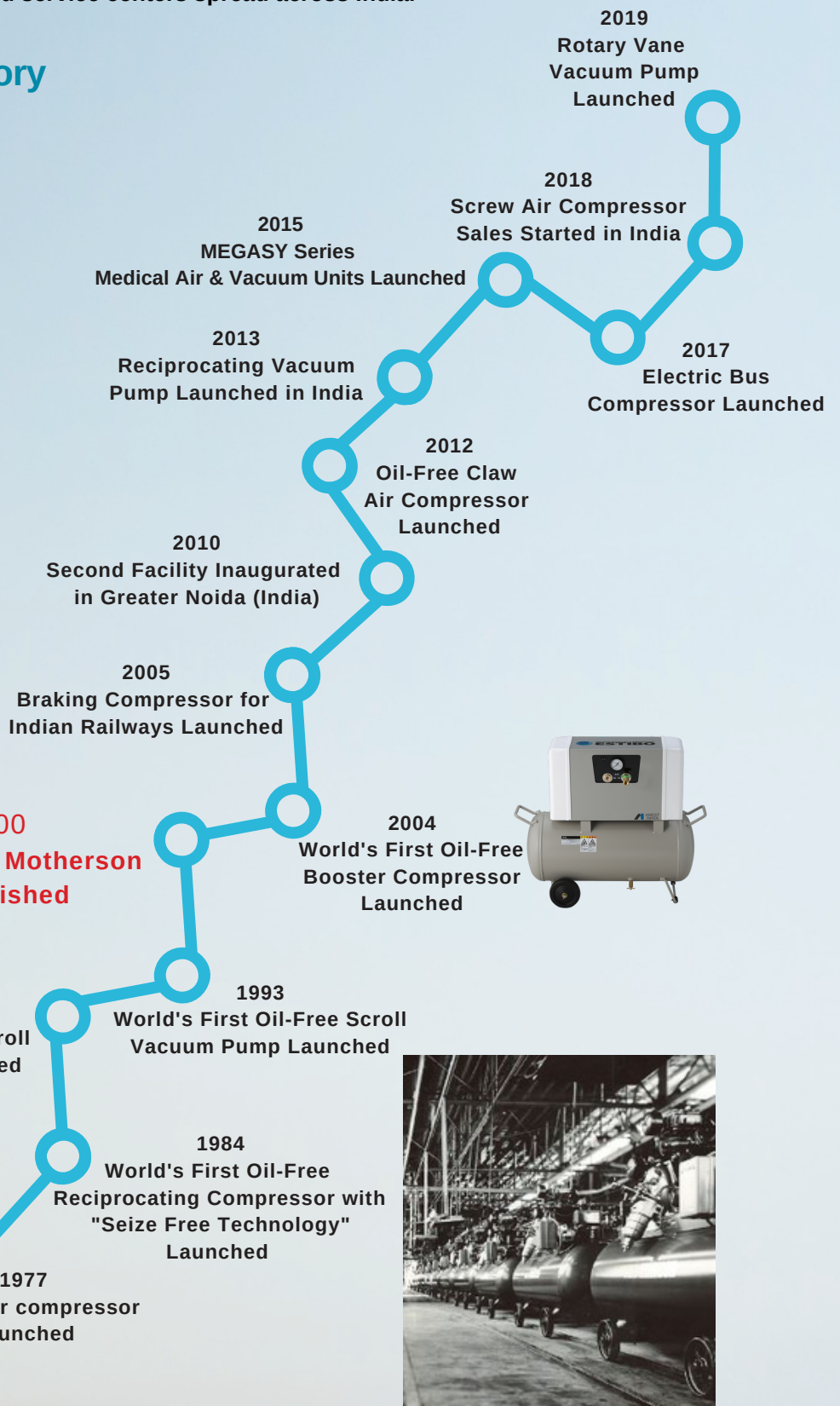
The Air of Trust

Anest Iwata Motherson

Anest Iwata Motherson (AIM) is a joint venture between Anest Iwata Corporation, Japan, and Motherson Group, India. Anest Iwata Corporation is one of the global leaders in Air Compressors and Vacuum Pumps with more than 9 decades of inspiring history of technological excellence.

Anest Iwata Motherson is committed to delighting its customers by ensuring the supply of the best quality products, supported with effective after-sales services at optimum value. The company has two state-of-the-art manufacturing facilities and a wide network of sales and service centers spread across India.

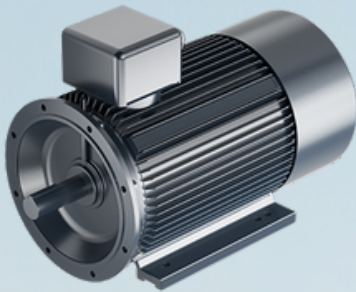
Anest Iwata Inspiring History



High Quality Components

- **Highly Reliable Air-end**

Machined by high precision CNC machine, and inspected by high precision 3D inspection machine. Onsite high reliability proved in the market for decades, 5:6 Profile rotor equipped with world-famous bearing.

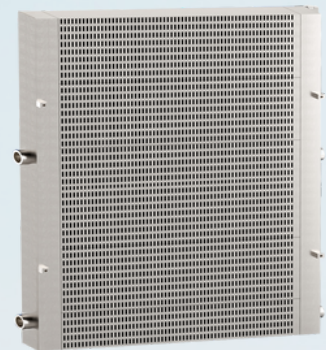


- **IEC Standard TEFC Motor**

TEFC, IP 55 Protection Grade, F Grade Insulation, S1 Duty ensures stable running even in 24hour / 7-day applications. Top-quality SKF motor bearings ensure long service life.

- **Oversized Cooler**

An oversized cooler with a 30% reserve margin, ensures excellent cooling even under high ambient conditions, For decades it has been proven even in tropical countries, like UAE, Saudi Arabia, etc.



- **Siemens Core Components**

1. Oversized Siemens contractors are selected. It's for the stable operation to ensure longevity, even in the heaviest duty applications.
2. Intelligent PLC control, which monitors all key running parameters of the compressor. The PLC reports on 12 alarms and 13 security protections.

SCREW AIR COMPRESSOR

Full-automatic Interlocking Control & Operation Management



12 alarms on key indicators such as pressure, temperature, electric current, signal, etc., and comprehensive safety precautions with an intelligent micro-computerized controller equipped with English display switching, and maintenance deadline reminding. New multiplayer joint control adopted for RS485 communication Interface, showing current status to clients simply and safely.

Safe and leakage free Connections



All-steel pipeline and flexible connections are adopted free from conventional low-cost hose design in the industry to eliminate leakage resulting from pipeline aging and bursting; meanwhile, clamps or fluororubber O ring flexible plan seal is adopted to reduce pressure loss in oil lines or leakage to further buffer vibrations effectively.

Design of Safety Measures



Guards are installed outside of the drive system according to CE and UL standards to prevent finger from reaching in to effectively protect human safety. Safety earthing is provided as standard configuration to effectively prevent safety hazards caused by static electricity.



Siemens Electrical Components



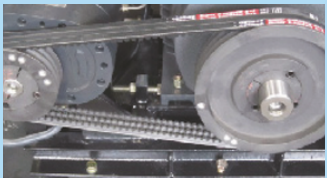
Reliable Siemens core electrical control components with sophisticated technology to ensure stable and long-term operation of the machine unit with clear and reasonable processes.

Heavy-duty Air Filter (with prefilter)



With imported air filter with high efficiency and low pressure loss, quality of intake air is controlled at air compressor source to ensure stable normal operation of the machine under complicated working conditions.

High-efficiency Drive System of US Brand



Martin pulley made in the USA and OPT belt made in Germany to ensure a transmission efficiency no less than 98% and service life 3-5 times of those driving systems made locally.

Technical Specifications



Model	Unit		C-AIR 8	C-AIR 10	C-AIR 15	C-AIR 20	C-AIR 25	C-AIR 30	C-AIR 40	C-AIR 50
Power	HP		7.5	10	15	20	25	30	40	50
	kW		5.5	7.5	11	15	18.5	22	30	37
Maximum Pressure	Bar	7.0 / 8.0 / 10.0 / 12.5								
Pressure Control Range	Bar	6.0 - 7.0 / 7.0 - 8.0 / 9.0 - 10.0 / 11.5 - 12.5								
Capacity (FAD)	7 Bar	CFM	31	40	58	84	123	138	185	235
	8 Bar	CFM	29	37	55	80	110	127	181	225
	10 Bar	CFM	26	33	51	69	101	116	153	207
	12.5 Bar	CFM	23	30	44	63	90	102	135	186
Discharge Connection	inch		RC 1/2	RC 1/2	RC 3/4	RC 3/4	RC 1	RC 1	RC 1	RC 1-1/2
Sound Level (@ 1 Meter)	dB(A)		68	68	66	70	73	73	73	75
Dimensions	Length	mm	900	900	800	800	900	900	900	1000
	Width	mm	680	680	950	950	1150	1150	1150	1300
	Height	mm	970	970	1130	1130	1350	1350	1350	1470
Weight	Kg		230	250	380	420	530	580	640	800

Note :

- Standard Voltage is 415V/50Hz
- Free Air Delivery (FAD) is measured as per ISO 1217: 2009 - Annex C
- Mean noise level measured at a distance of 1 m according to ISO 2151: 2004 using ISO 9614/2 (sound intensity method); tolerance ± 3 dB(A)
- All performance parameters are as per JIS (Japanese Industrial Standards)
- Standalone Refrigerated Air Dryers, Heatless Air Dryers, Oil Removal Filters, and Auto Drain Valves are also available upon request
- Specifications may change without prior notice



Engineering Capabilities & Customised Solutions.

We at Anest Iwata Motherson (AIM) are committed to delighting our customers. Our state-of-the-art Air Energy Core Technology Centre located in Yokohama, Japan works relentlessly on innovations and technologies that add value to our products and make us ready to serve our customer's future needs. It is our customer's trust in us that we have developed many "World's First" products.

Always Ahead with Anest Iwata!

**Innovation driven
World's 1st
products**



**Oil Free Reciprocating
Compressor**



**Oil Free Scroll
Compressor**



**Oil Free Booster
Compressor**

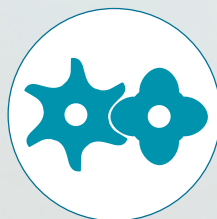


**Oil Free Scroll
Vacuum Pump**

Anest Iwata
Australia Pty.
Ltd.



Reciprocating



Screw



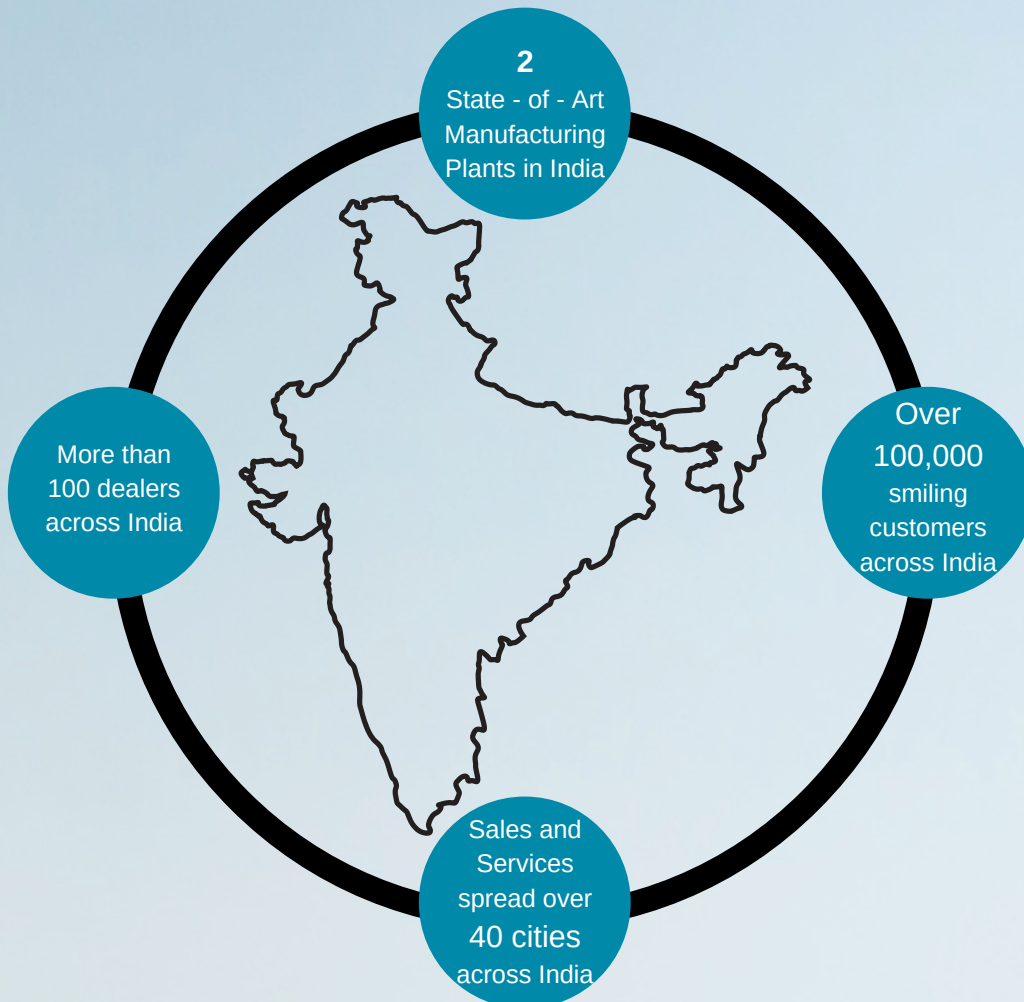
Scroll



Claw

Compressed Air Solutions in all Technologies

Active with Newest Technology



Anest Iwata Motherson Pvt. Ltd.
B-123 & 124, Sector-63, Noida - 201301,
Distt. Gautam Budh Nagar, UP, India.
Email: anestiwata@aim.motherson.com
Web: www.aimcompressors.com



ISO-9001

For any details reach us at:

Head Office: +91-120-4600-500/510/511/512/518

North : +91-9910394044 +91-9871362399

East : +91-9899553261 +91-9990023423

West : +91-9899553276 +91-9899553648

South : +91-9902999322 +91-9940654560

AUTHORISED CHANNEL PARTNER

